



### WHY THIS SITE ?

This site is appropriately located in the heart of the city. A breath of life into the grey mass of structures is the need of the hour in the area and hence development of this site will fill in the blanks that urbanization has left, earning meaning in the lives of its users. Close proximity of the site to a commercial hub ensures maximum use extracted and the surrounding residential areas provide it with potential to become a community space.

### LOCATION

The site is located in the city of Pune. In a Locality called Bhudhwar Peth. Site is right beside the Dagadusheth.

### HISTORY



Bhudhwar wada  
Burnt on 13th May 1879

### ELECTRONIC MARKET

TAPKIR GALLI, LOCATED IN BUDHWAR PETH IS HOME TO COUNTLESS ELECTRIC APPLIANCE SHOPS. THE VARIETY IN THIS MARKET IS VERY VAST AND AFFORDABLE, AND HENCE ATTRACTS A LARGE NUMBER OF DIVERSE CROWD.

Water Haud 1922



Pandurang Karnik chose to end his life rather than surrender.



In 1936 site was granted to the labourers as a waiting space which they have continued to use till date.

### LAXMI ROAD

LAXMI ROAD IS A STRETCH OF 4 KMS, AND ONE OF THE BUSIEST AND LIVELIEST STREETS IN PUNE. IT CONSISTS OF ROW AFTER ROW OF SHOPS.



- MIX USE BUILDING
- RESIDENTIAL USE BUILDING
- PUBLIC BUILDING

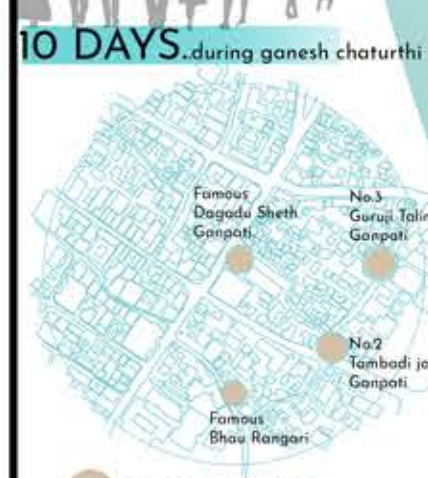
### NANA WADA

NANA WADA WAS ONCE A HOME OF A BRAVE MARATHA LEADER NANA PHADANVIS. IT IS A PART OF THE IMPORTANT HERITAGE THAT IS PASSED DOWN TO THE RESIDENTS OF THE CITY.



### GANPATI TEMPLE

In our area, there is main three ganesh temples located. At the time of ganpati festival population increase by 40% to 50 %.



### URBAN FABRIC



The urban fabric of this area is fine grain with the roads closely interconnected with each other forming a close knit cityscape. The thoroughfares are teeming with population due to easy accessibility to all areas. wing to the proximity of built structures, there is hardly any open space left, appearing as a packed streetscape.

### In between tourism and daily life



**Age**

- 0-12 years of age
- 13 - 20
- 21 - 59
- older than 60

**Landuse**

- Built up
- Semi open
- Open

**Users**

- Direct users - Residents, shopkeepers, People who will use the space daily.
- Indirect users - visitors who will stumble upon the

**Heritage walk**

- Heritage walk
- Heritage Structure

**View and Movement of Tourist**

- Pune metro

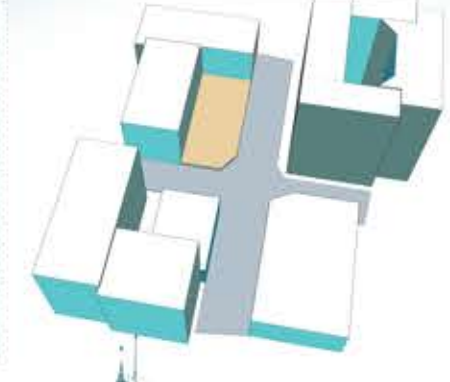
### BUILDING TYPOLOGIES & FEATURES



EXISTING SITE PICTURES

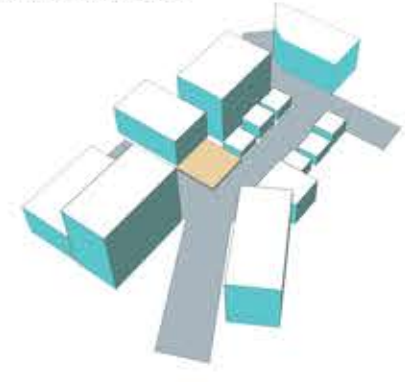
### KHARADI EON

- Buildings with their own recreation areas.
- Very limited use will be extracted
- High number of permeable spaces.



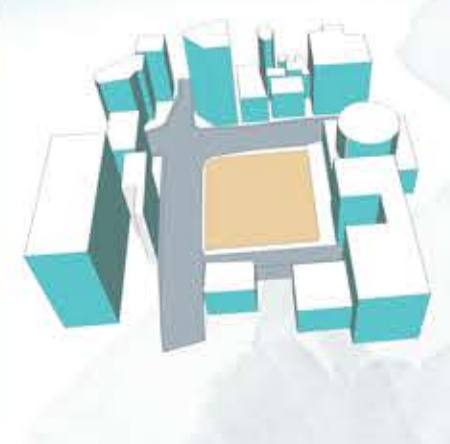
### KOTHRUD BAROMETER

Used during limited time. Organized & pre planned neighbourhood. Presence of recreation spaces at varied intervals. Presence of recreation spaces at varied intervals.



### SELECTED SITE

- Absolutely no green pockets.
- Area needs organization.



"There is a way that nature speaks, that land speaks; and the way that structures drown out their voices"

### FOOTFALL



Morning 10-15/min



Afternoon 15-18/min



Evening 30-35/min

### ROAD NETWORK



- Main Road
- Two way Road
- One way Road

### TULSHI BAUG ROAD

### LAXMI ROAD

### ELECTRIC MARKET BUDHWAR PETH

### DAGDUSHETH HALWAI GANPATI MANDIR

### BHUDHWAR PETH HUTATMA CHOWK

### APPA BALWANT CHOWK

### TULSI BAUG

TULSI BAUG IS LOCATED IN WHAT IS KNOWN AS THE CORE OF PUNE CITY, BUSTLING WITH CROWD MOST DAYS OF THE WEEK, BECAUSE OF A BUSY ACCESSORIES AND CLOTHING MARKET.

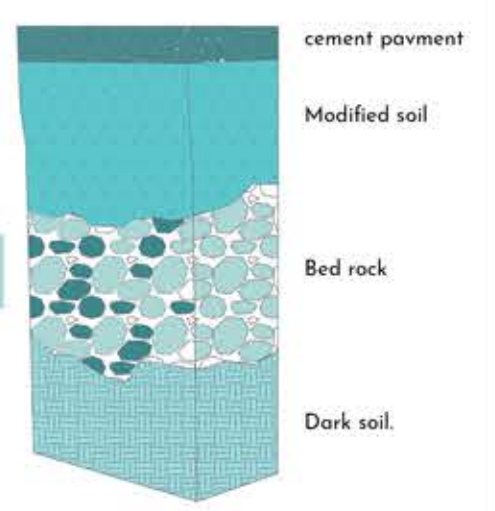
### ABC CHOWK

APPA BALWANT CHOWK IS ONE OF THE MOST FAMOUS CROSSROADS IN PUNE. THE ABC CHOWK IS HUGE POPULAR FOR ITS VARIETY OF BOOKSHOPS AND STATIONARY SHOPS.

### Climate



### Topography



### LAL MAHAL

THE LAL MAHAL IS ONE OF THE MOST FAMOUS MONUMENTS IN PUNE. IT IS WHAT PEOPLE WOULD REFER TO AS ONE OF THE LEGACIES OF THE MARATHA EMPIRE THAT RULED PUNE IN THE OLD DAYS.

### How was the project structured ?

- Removing Physical barrier.
- Social inclusion at local level.
- The Re-appropriation of public spaces favouring new use and programs.
- Improving quality of life of the community.

- Transform the left over space.
- Design a site with activities for the citizen in areas of need.

Local development strategy that has produced a public space.

low cost + Quicker + low maintenance =

WHO were taken into account? citizen age group what are they looking for?

- Children -> Need to Play
- Teen -> Need to Gather.
- Adults and senior citizen -> Need to Talk/Meet

- Site is in close proximity with bustling heritage sites
- Presence of major urban magnets : commerce, education and culture
- Easily accessible
- Site blends into native urban fabric

- Low percentage of pedestrian pathways
- Lack of green spaces.
- Unused patch in the heart of the city
- storm water drainage
- Misuse of site due to no visibility

- Site has the ability to become a refuge from the chaos outside
- Site has the potential to become a community space which benefits diversity
- Metro will soon be a major transport mode

- Prone to overcrowding during certain times of the year
- Depleting green cover

### Critical Issue

1. There is no public space



### WHY in a public space ?

Potential Design Quality

- Use of powerful colors
- Reinterpretation of public space as place.

Community Space

- Generate new meeting space.
- Education through Public Space.

Economic sustainability.

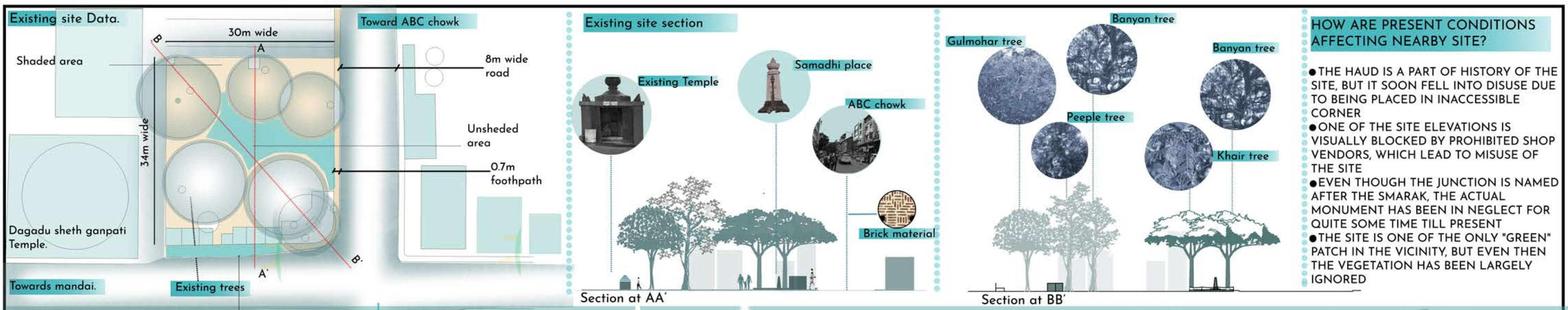
- Using the same material from the Locality using locally available material.
- Low cost Material.

2. Over population.

A crucial issue to be tackled in this area would be crowding, which we have decided to overcome by simply diverting and dispersing it.

### WHAT next ?





**HOW ARE PRESENT CONDITIONS AFFECTING NEARBY SITE?**

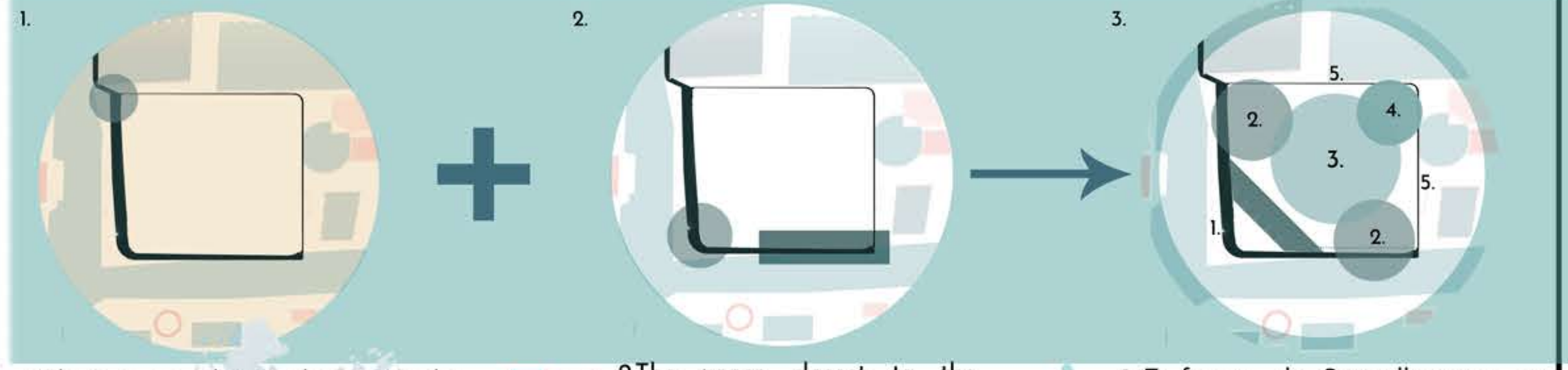
- THE HAUD IS A PART OF HISTORY OF THE SITE, BUT IT SOON FELL INTO DISUSE DUE TO BEING PLACED IN INACCESSIBLE CORNER
- ONE OF THE SITE ELEVATIONS IS VISUALLY BLOCKED BY PROHIBITED SHOP VENDORS, WHICH LEAD TO MISUSE OF THE SITE
- EVEN THOUGH THE JUNCTION IS NAMED AFTER THE SMARAK, THE ACTUAL MONUMENT HAS BEEN IN NEGLECT FOR QUITE SOME TIME TILL PRESENT
- THE SITE IS ONE OF THE ONLY "GREEN" PATCH IN THE VICINITY, BUT EVEN THEN THE VEGETATION HAS BEEN LARGELY IGNORED

**THOUGHT PROCESS**

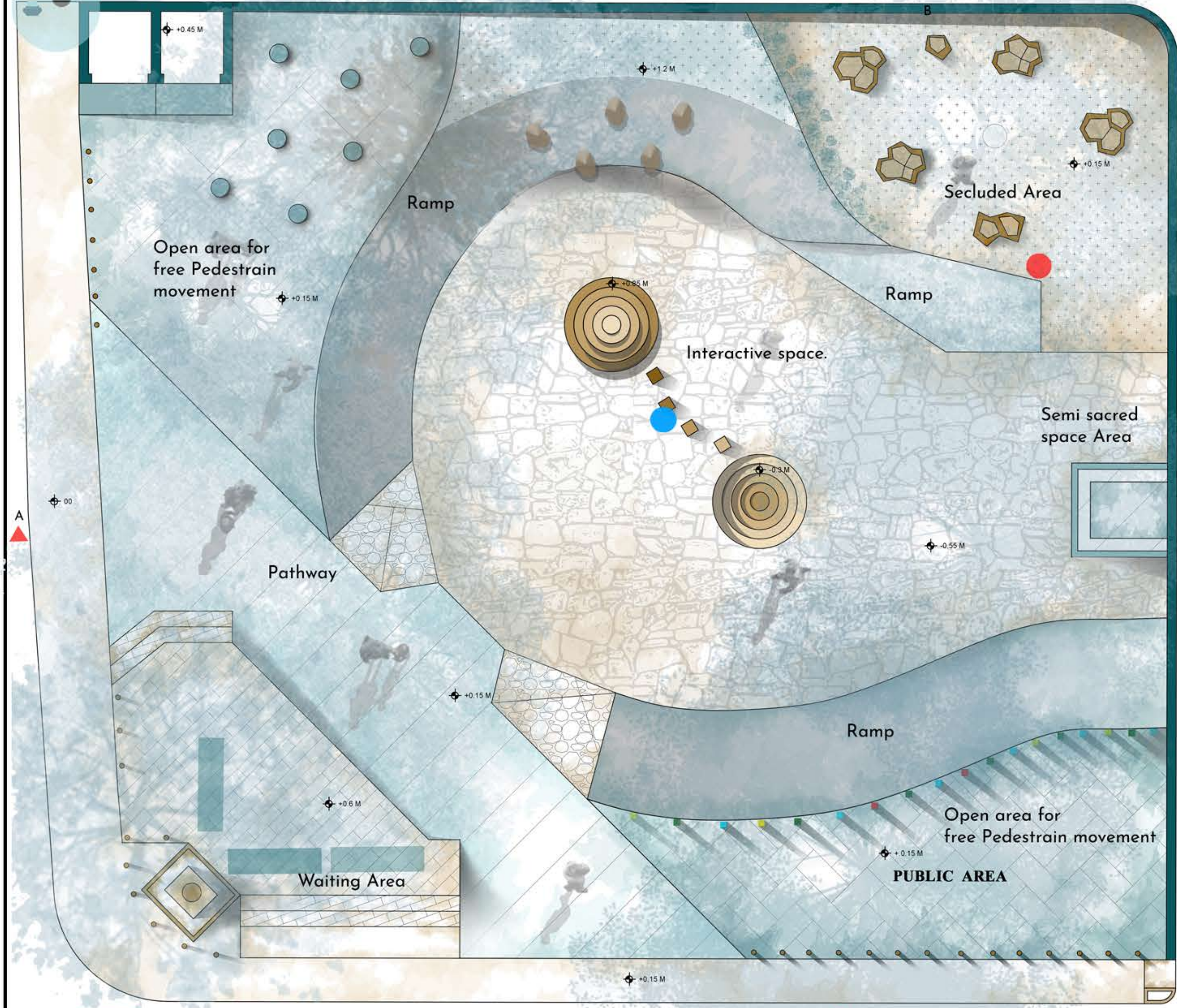
THROUGH OUR SPACE DESIGN, WE INTEND ON EMBARKING ON A COURSE OF ACTION THAT WILL LEAD TO THE EVOLUTION OF NEGLECTED PLACES IN THE CITY. IN A SCENARIO WHERE PEOPLE CAN'T SLOW DOWN. WE HAVE DECIDED TO USE A PLACE IN TRANSITION AS OUR SITE. A SPACE WHICH REQUIRES THE LEAST OUT OF A USER, AND IS PASSIVE IN IT'S APPROACH. THE DESIGN HAS BEEN THOUGHT OF KEEPING THE TRADITIONAL BUILDING TYPOLOGIES IN MIND BUT NOT ENTIRELY, UTILIZING CURVES AS A CONTRASTING POINT. THE DESIGN ALSO HIGHLIGHTS WHAT SIMPLICITY CAN ACHIEVE, ALONG THE ECONOMICAL ELEMENTS WHICH SUPPLEMENT THE DESIGN.

**HOW**

THE SPACES ARE ZONED?



A water bowl has been provided for birds near the boundary, so that it is easily visible to them.



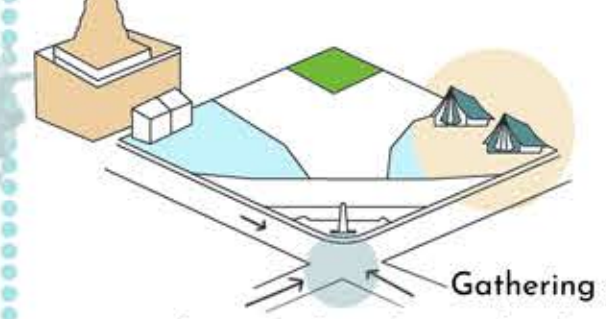
**PLAN** SCALE 1:100  
Area-1152 sq.m

1. There is an abrupt change in the normal footpath and footpath that runs in front of the temple.

2. The zones closest to the footpath are for activities such as waiting and are meant for short term users.

- To free up the Samadhi corner we have extended the footpath
- To accommodate the temporary crowd that will be created, the area directly beside the footpath is kept open.
- The areas beside a path are observed to be engaging, hence we have provided our most interacting zones there; catering to the regular users and children.
- The region farthest from the footpath, is meant for a more relaxed seating; created for motivated activities.
- The wall given on the side of the temple in intended to give them the privacy they require while transporting sensitive materials.

**During Ganesh Chaturthi.**



During the 10 day festival of Ganesh Utsav, the site can be cordoned off and might be used as a medical help centre / service desk by erecting temporary tents

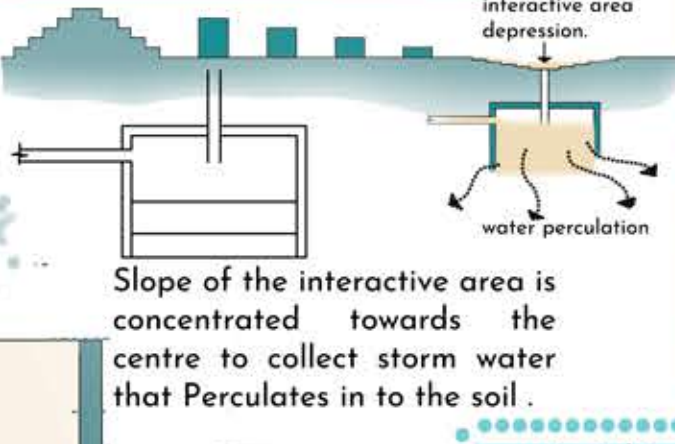
**Tree palate**

NAME	HEIGHT	FOLIAGE RADIUS	FEATURES
PENTAS LANCEOLATA	1.8 M	WIDTH - 0.9	ATTRACTS BUTTERFLIES AND HUMMINGBIRD
BANYAN TREE (FICUS BENGHALENSIS)	10M	4.5M	SHADING
GULMOHAR (DELONIX REGIA)	12 M	4.5M	SHADING
PEEPAL (FICUS RELIGIOSA)	10M	3M	SHADING
BALHINIA ACUMINATA (KACHAR FLOWER TREE)	6 - 10M	3M - 6M	PURIFIES AIR FRAGRANT
KAHIR TREE (SENEGLIA CATECHU)	0M	0M	SACRED GRASS
DURVA (CYNDHODIN SACTYLON)	0.5M		SACRED FLOWER
HIBISCUS	4.5M	0.9 - 1.0M	FRAGRANT REPELS
LAVENDER (LAVENDULA)	0.9M - 1.8M		Mosquito Repellent

**what next ?**

- BY CHANGING SOMETHING AS SMALL AS FOOTPATH WIDTH, WE HAVE INCREASED FREE FLOW OF PEDESTRIANS, WHICH AFFECTS THE ENTIRE PEDESTRIAN FLOW OF THE AREA
- LOCATION OF THE SITE HIGHLIGHTS THE STARK CONTRAST BETWEEN BUILT AND OPEN SPACES, AND HOW IMPORTANT IT IS FOR PHYSICAL AND MENTAL HEALTH
- THE SITE HAD VERY EXTREMELY LOW PERCENTAGE OF RESIDENT USERS, AND WITH THIS SOLUTION WE HAVE CREATED A COMMUNITY SPACE WHICH CAN BE USED COMFORTABLY.
- THE DAGDUSHETH PASSAGE IS GIVEN THE PRIVACY IT NEEDS
- THE OPTIONS WE HAVE PROVIDED DURING THE GANESH UTSAV BENEFIT THE VISITORS DIRECTLY
- BY PROVIDING A WATER RECHARGE PIT WE HAVE SUGGESTED SOLUTION WHICH CAN BE UTILISED IN ANY AREA.

**Storm water Management**



Slope of the interactive area is concentrated towards the centre to collect storm water that Percolates in to the soil.

The frames, which give the illusion of a full arch on the footpath provide a focused track, which entices users to pass through them, thus preventing overcrowding on site.

The slopes provided leading to the centre of the park are meant to be passively interactive, giving a palette of options to the users.

**"Everything in nature invites us constantly to be what we are".**  
-Gretel Ehrlich



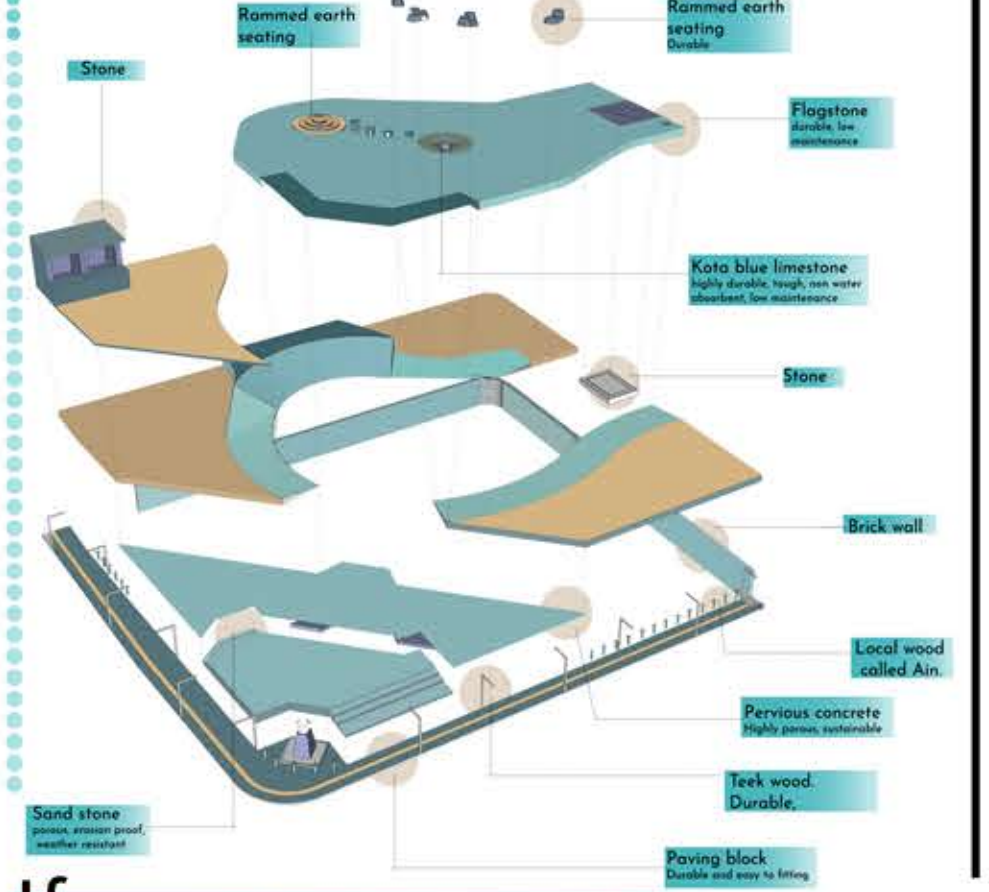
TEMPLE - IN A SPACE WHICH PROMOTES EQUITY, THE ESSENCE OF THE SHRINE HAS BEEN SHIFTED INTO A MORE NATURAL FORM,

TO ORGANIZE THE CROWD, WE HAVE DECIDED TO EXTEND THE FOOTPATH TO ACCOMMODATE THE PEDESTRIANS.

COLOUR THERAPY - USE OF APPROPRIATE COLOURS TO INDUCE A TEMPORARY SOOTHING FEELING

SMARAK - SEATING PROVIDED AROUND SMARAK HAS BEEN MADE KEEPING IN MIND THE ORIGINAL USERS, THE LABOURERS, AS WELL AS A WAITING SPOT

**material indication exploded view**



**If we consider...**

IF 6 LABOURERS WORK FOR 18-25 DAYS ONSITE, WITH THE MATERIAL PALETTE GIVEN, THE TENTATIVE COSTING WILL BE RS 5,47,097 lakh.

**Isometric view**

