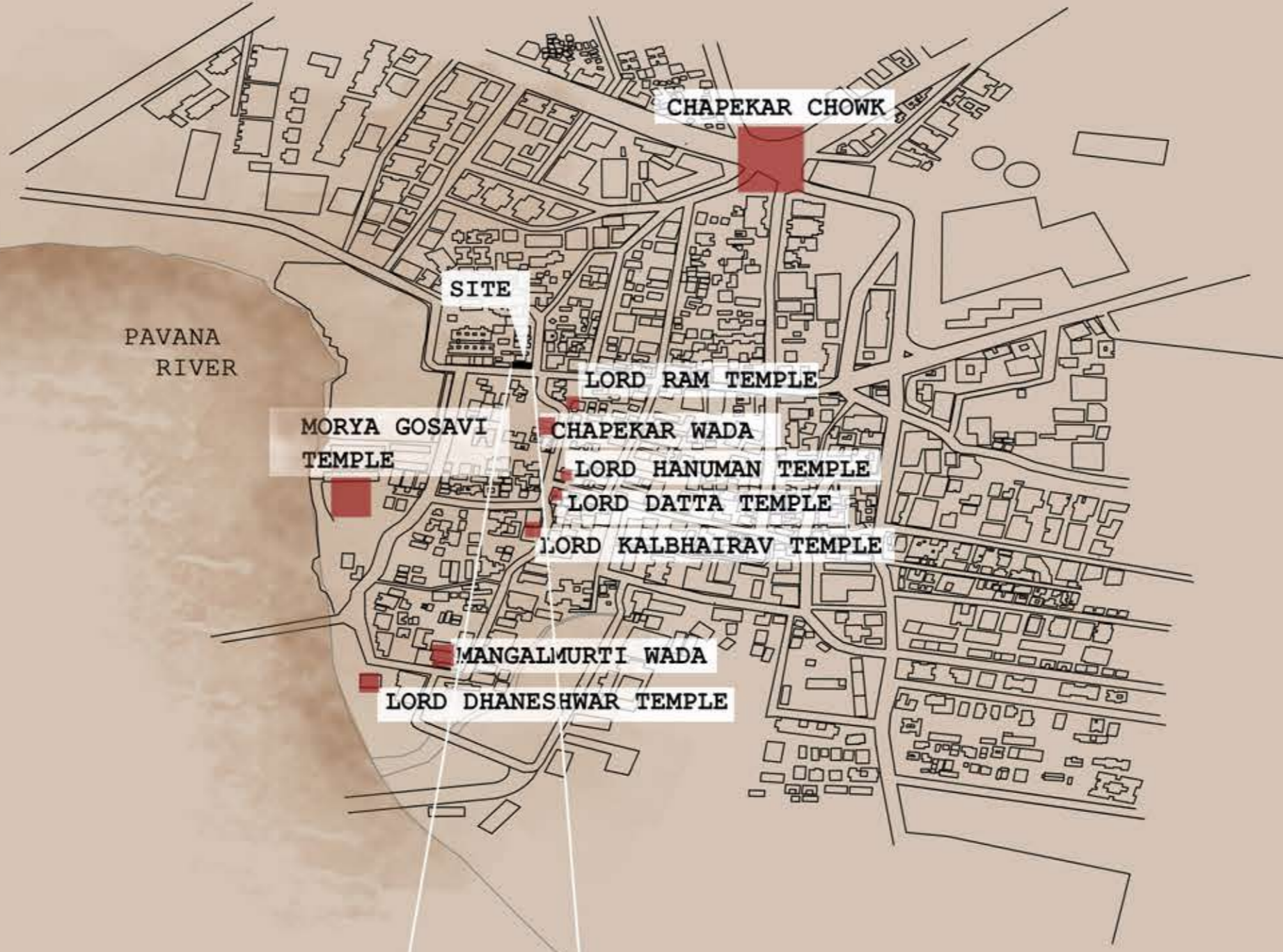


HISTORY

MORYA GOSAVI
 CHINCHWAD TOWNSHIP IS THE BIRTHPLACE OF SAINT MORYA GOSAVI WHOSE HOLY TOMB IS LOCATED HERE. MORYA GOSAVI IS CONSIDERED THE CHIEF SPIRITUAL PROGENITOR AND THE MOST IMPORTANT SAINT OF THE GANAPATYA - THE HINDU CENTRED ON GANESHA WORSHIP - TRADITION AND HAS BEEN DESCRIBED AS "THE MOST FAMOUS DEVOTEE" OF GANESHA. CHINCHWAD HAS A LARGE NUMBER OF LORD GANESH DEVOTEES. PEOPLE FROM ALL OVER INDIA COME TO VISIT SAINT MORYA GOSAVI'S HOLY TOMB. THE LIFETIME OF MORYA GOSAVI IS SPECULATED BETWEEN THE 13TH TO 17TH CENTURY. NUMEROUS LEGENDS RECALL HIS LIFE. MORYA BECAME DEVOTED TO GANESHA WHEN HE STARTED VISITING THE MORGGAON TEMPLE OF GANESHA. IT IS BELIEVED THAT DUE TO THE HINDRANCE IN MORYA'S SERVICES TO THE GOD IN THE POPULAR GANESHA SHRINE, GANESHA TOLD MORYA THAT HE WOULD APPEAR IN CHINCHWAD FOR MORYA TO WORSHIP, SO MORYA MOVED FROM MORGGAON TO CHINCHWAD, WHERE MORYA BUILT A GANESHA TEMPLE. CONSEQUENTLY, MORYA TOOK SANJEEVAN SAMADHI BY BURYING HIMSELF ALIVE IN HIS TOMB.

CHAPEKAR BROTHERS
 BAJI CHAPEKAR, THE GREAT GRANDFATHER OF THE THREE CHAPEKAR BROTHERS, LIVED IN CHINCHWADGAON IN THE CHAPEKAR WADA. HE WAS THE MANAGER OF THE CHINCHWAD DEVASTHAN. THE THREE CHAPEKAR BROTHERS- DAMODAR, BALKRISHNA AND VASUDEV WERE HANGED FOR KILLING BRITISH OFFICIAL W. C. RAND IN 1897. VASUDEV'S WIFE DIED SOON AFTER. BALKRISHNA'S WIFE GANGUBAI AND DAMODAR'S WIFE DURGABAI LEFT PUNE AND CAME TO CHINCHWAD. DURGABAI AND HER SON DHONDU LIVED HERE FOR 20 YEARS. LATER, A BRITISH OFFICIAL CAME TO PUNE IN SEARCH OF THE CHAPEKAR FAMILY AND TOOK THEM TO PUNE AND TENANTS BEGAN TO LIVE IN THE WADA FROM 1935 ONWARDS. A MONUMENT DEDICATED TO CHAPEKAR BROTHERS HAS BEEN ERRECTED AT THE CENTRE OF THE TOWN AT CHAPEKAR CHOWK. THE TOWN IS ALSO BLESSED WITH A RICH CULTURAL HERITAGE AND HISTORY, CHINCHWAD IS THE BIRTHPLACE OF MANY FREEDOM FIGHTERS LIKE CHAPEKAR AND HALBE.



AREA
3 SQ. KM

NO. OF HOUSEHOLDS
11352

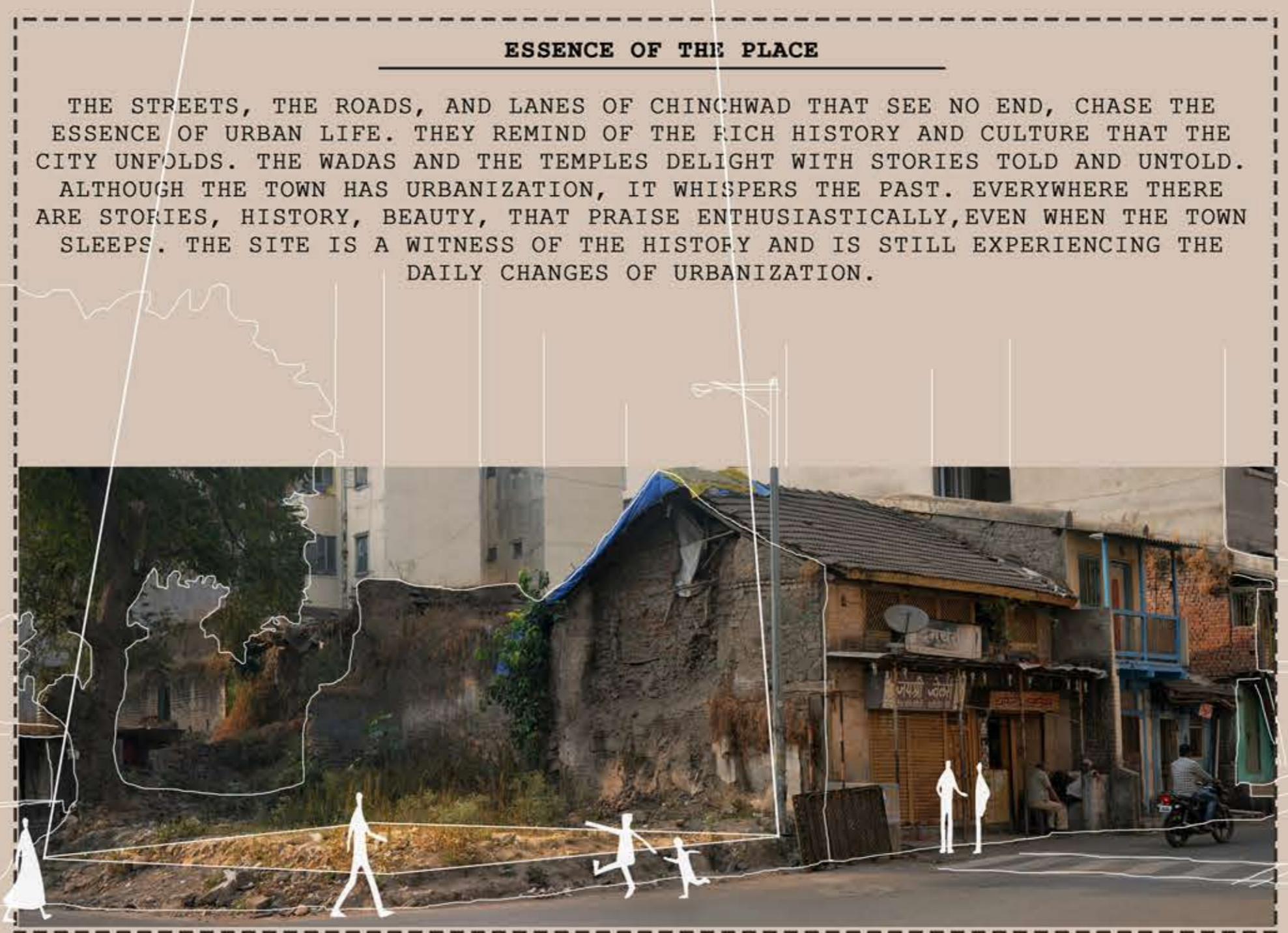
TOTAL POPULATION
45975

LITERACY
77.8%

AVERAGE SIZE OF THE FAMILY
4 PERSON/FAMILY

DENSITY
15325 PERSON/SQ. KM

ENHANCE
"MEND THE CONTEXT"



MAPPING ROUTE OF HERITAGE WALK

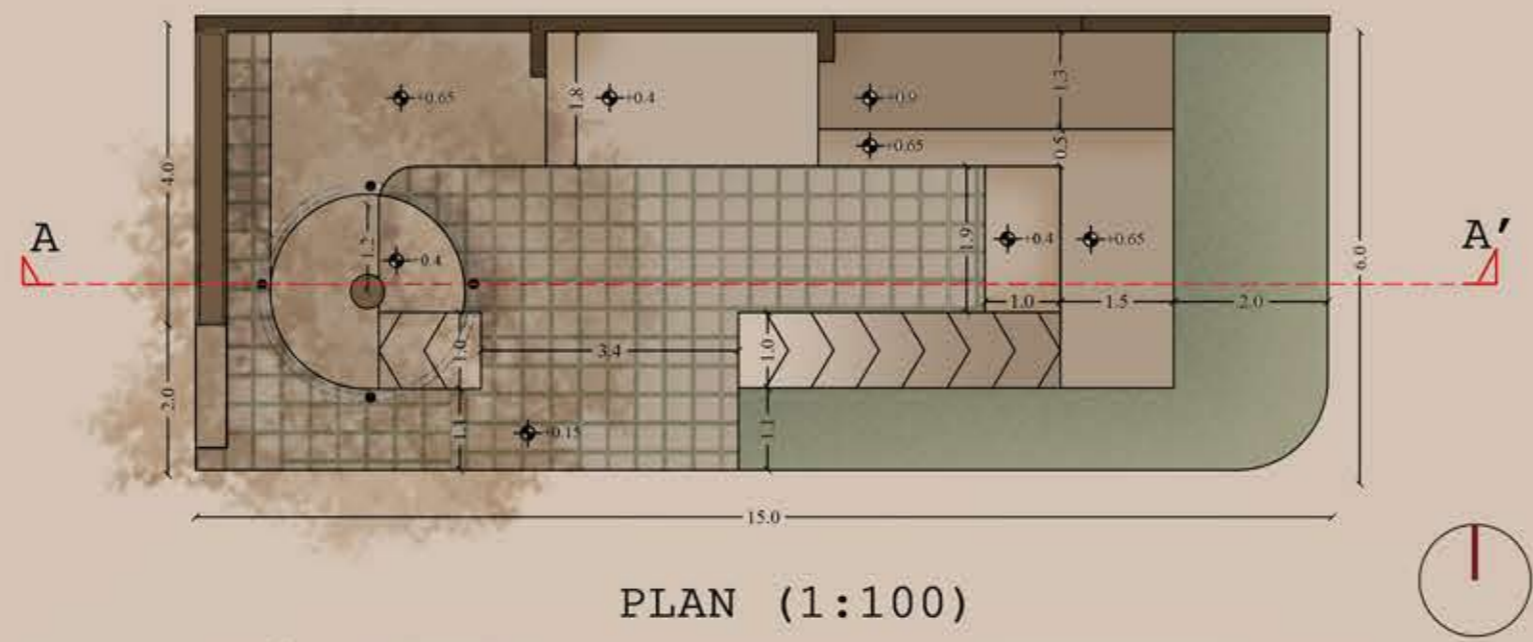


SELECTED MONUMENTS

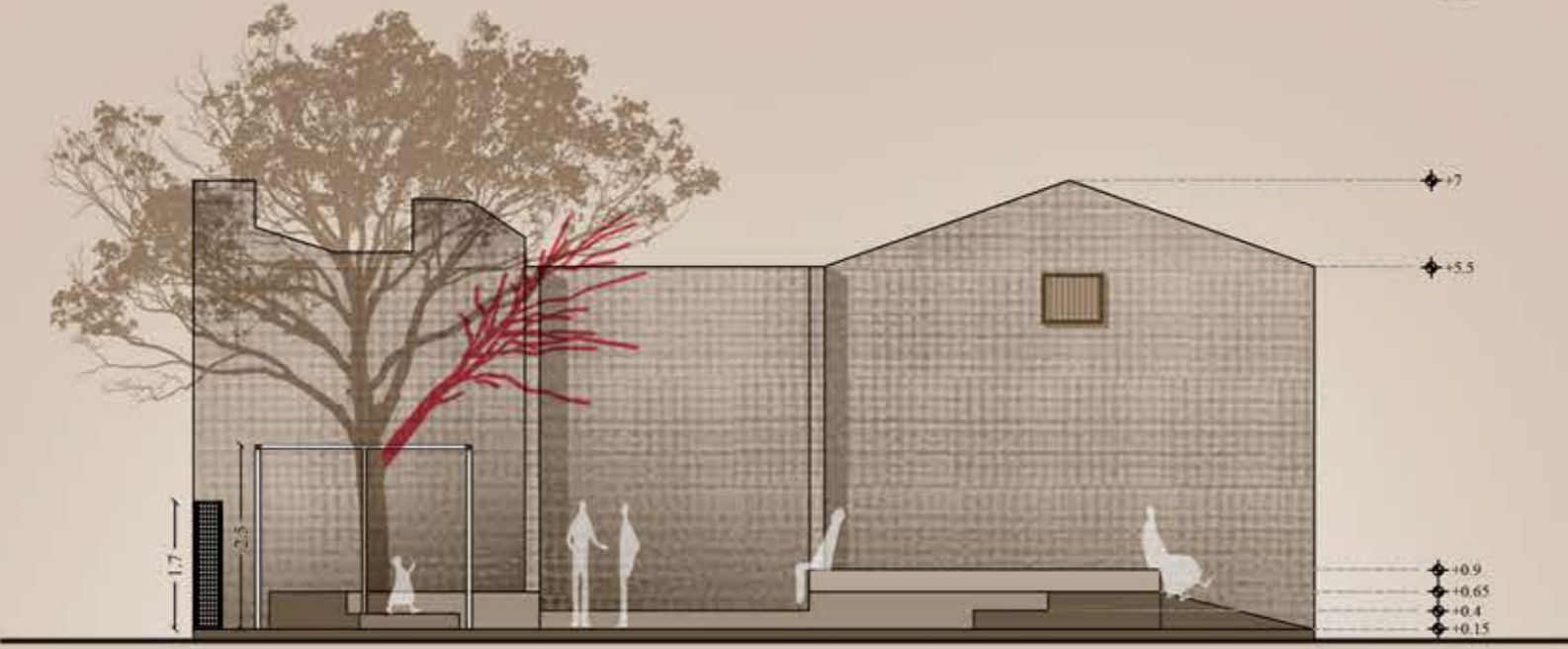
PROPOSED SEQUENCE

- 1.- CHAPEKAR CHOWK
- 2.- LORD RAM TEMPLE
- 3.- CHAPEKAR WADA
- 4.- LORD HANUMAN TEMPLE
- 5.- LORD DATTA TEMPLE
- 6.- LORD KALBHAIKAV TEMPLE
- 7.- MANGALMURTI WADA
- 8.- LORD DHANESHWAR TEMPLE
- 9.- MORYA GOSAVI TEMPLE

A SUITABLE ROUTE IDENTIFIED TO ACHIEVE THE DESIRED CIRCULATION AND FLOW FOR THE WALK POTRAYING THE SERIES OF EVENTS THAT OCCURED IN HISTORY.



PLAN (1:100)



TOTAL AREA 90 SQM

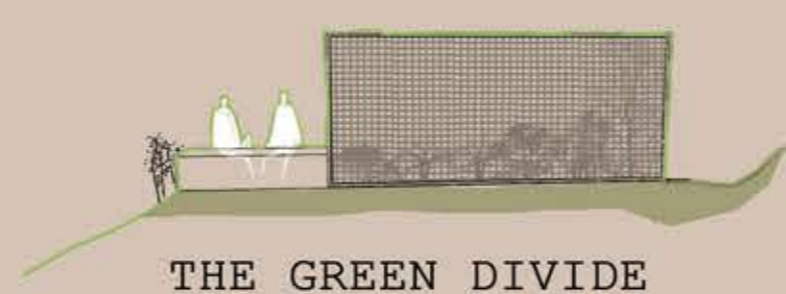
SECTION AA' (1:100)

(ALL DIMENSIONS ARE IN METERS)

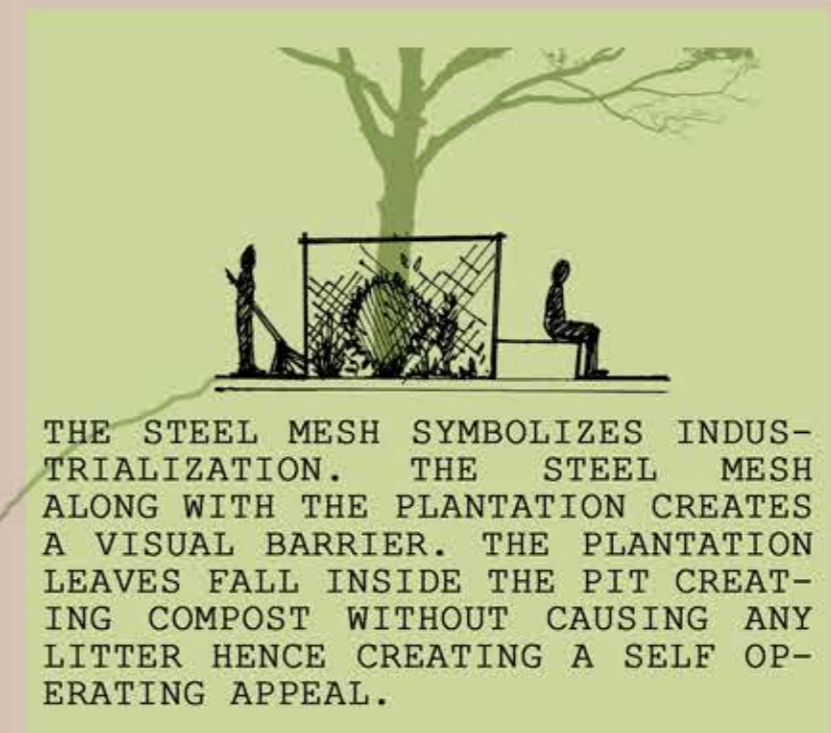
THE INSTALLATION DISTINGUISHES THE TAMRIND TREE WHICH IS THE SILENT WITNESS OF HISTORY. IT ALSO LIGHTENS THE SPACE DURING DUSK.



THE LOOP OF LIGHT



THE GREEN DIVIDE



THE STEEL MESH SYMBOLIZES INDUSTRIALIZATION. THE STEEL MESH ALONG WITH THE PLANTATION CREATES A VISUAL BARRIER. THE PLANTATION LEAVES FALL INSIDE THE PIT CREATING COMPOST WITHOUT CAUSING ANY LITTER HENCE CREATING A SELF OPERATING APPEAL.

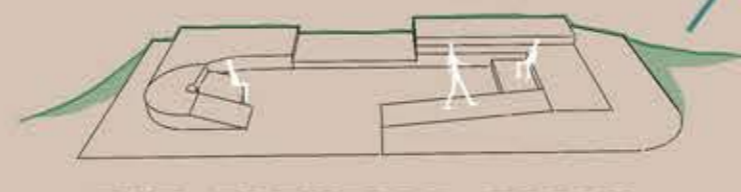
MATERIAL PALETTE :

- SOIL - USE OF ON-SITE MATERIAL.
- LAND COVER - SELF MULTIPLYING, EASY TO MAINTAIN.
- STEEL - EASILY AVAILABLE, SYMBOL OF INDUSTRIALIZATION, GOOD WORKABILITY
- GREEN PAVERS - AESTHETIC, PERCOLATION OF WATER, EASY MAINTENANCE

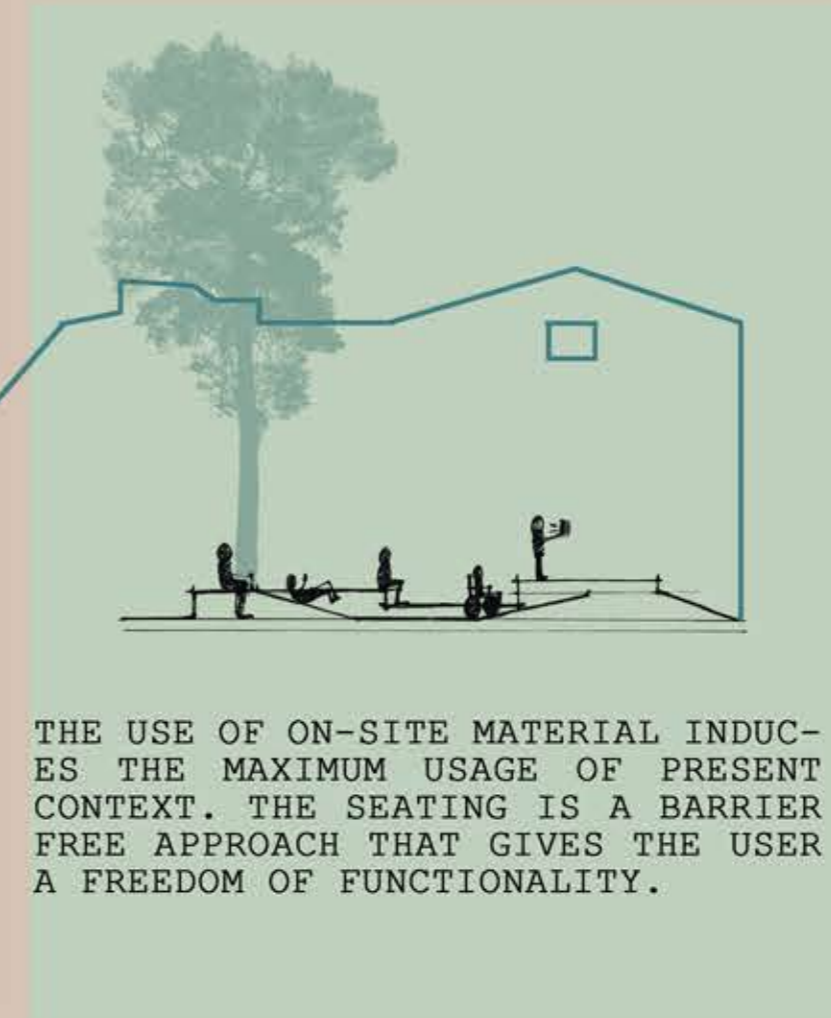
THE TREE IS THE WITNESS OF THE RICH HISTORY AND CULTURE THAT THE CITY UNFOLDS. THE RED TREE BRANCH SYMBOLIZES THE BLOOD OF REVOLUTIONARIES AND THE STEEL WIRE WRAPPED AROUND IT SYMBOLIZES THE INDUSTRIALIZATION. THE STEEL BRANCH REPRESENTS THE LOST CHARACTER OF THE PLACE.



THE TREE OF MEMORY



THE FLEXIBLE EARTH



THE USE OF ON-SITE MATERIAL INDUCES THE MAXIMUM USAGE OF PRESENT CONTEXT. THE SEATING IS A BARRIER FREE APPROACH THAT GIVES THE USER A FREEDOM OF FUNCTIONALITY.

EXPERIENCE IMPROVE THE DESIGN."



THE ESSENCE

CONCEPT:

"IF WALLS COULD SPEAK, THEY WOULD HAVE THE MOST STORIES TO TELL."

THE BASIC THOUGHT IS TO REINCARNATE THE LOST BEAUTY OF THE HISTORIC ARCHITECTURE. THE MAXIMUM USE OF EXISTING MATERIALS, HIGHLIGHT THE BEAUTY IN THE IMPERFECTIONS OF RUINS AND GREAT COMBINATIONS OF USED AND NEW MATERIALS.

NATURE IS THE GREATEST CONTEXT IN THE EVOLUTION OF HISTORY SO AS TO SHAPE A SPACE AND ARRIVE AT THE GREATEST PERFECTION. ONE OF SUCH ELEMENTS IS TO BRING 'THE LOST TO LIGHT.'

THE SITE WAS BRUTALLY CHOPPED OFF DUE TO CONFLICTS CREATING A SPACE WITH ONLY RUINS AND NO LIFE.

"FOR THE ESSENCE OF A PLACE TO EXIST ALL THE ELEMENTS ARE NECESSARY."

ALL THE ELEMENTS AS A WHOLE AND NOT IN INDIVIDUAL FRAGMENTS BRING LIFE TO THE PLACE.



ALL YOU NEED IS LESS.

